

Xatellite ProX series

Industrial Grade indoor POE+ output Dual 5G CPE

Models

ProX 5: 5G

ProX 55: Dual 5G

ProX F: Single SFP

ProX FF: Dual SFP

*optional build-in PoE+ output



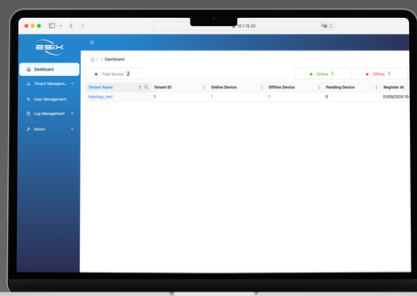
BGP4+ Available

With the powerful Quad-Core ARM V8 CPU and Dedicated Network Processing Unit Acceleration in place, BGP4+ is now at your disposal.

Aluminum Alloy Cover with POE+ output

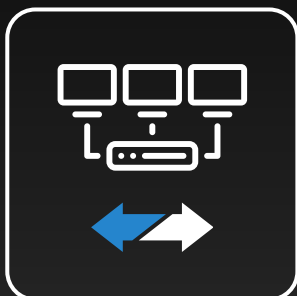
Used in industrial settings within various complex indoor industrial environments, with its 5 × PoE+ power output ports, it delivers ample power and network connectivity to end devices.

eBrain (Central Management)



A cloud-based, centralized device management platform with multi-tenant support, enabling efficient management of devices across multiple locations and branches.

SD-WAN Ready



Enhance your SD-WAN deployment with the power of Multi Ethernet WANs. You can leverage all available WAN connections to ensure uninterrupted connectivity and keep your business operations running smoothly.

Network Bonding, Failover

Bonds multiple networks together, including Multi-WAN capabilities, to create higher bandwidth. It seamlessly switches between connections within milliseconds for low latency and safe operation.



Use Cases



Smart Lamp Pole



Traffic Light,
Outdoor surveillance



Smart ports Crane
control, monitoring,
outdoor AGV



Maritime boat
management

XATELLITE PROX SERIES SPECIFICATION



Series		ProX			
Model		Xatellite ProX 55	Xatellite ProX 5	Xatellite ProX 55P	Xatellite ProX 5P
Signature	Signature	Dual 5G	Single 5G	Dual 5G, POE+ Out	Single 5G, POE+ Out
	Wi-Fi	Wi-Fi 6	Wi-Fi 6	Wi-Fi 6	Wi-Fi 6
	RJ45 Ethernet Ports (LAN + WAN)	5	5	5	5
	SFP Ports (LAN or WAN)	1	1	1	1
	POE+ output	NIL	NIL	150W, 5 × PoE+ ports	150W, 5 × PoE+ ports
	Bandwidth bonding & redundancy	5G + 5G + fixed line	5G + fixed line	5G + 5G + fixed line	5G + fixed line
Hardware	CPU	64-bit Quad-Core ARMv8			
	NPU	Twelve-Threaded network processing Unit			
	Form Factor	Aluminum alloy case			
	Mounting Kit Interface	75 × 75 mm VESA mount			
Cellular Network	Communication Standard	3GPP Release 16 NSA/SA, operation sub-6 Ghz			
	Application Network	5G NR SA, 5G NR NSA, LTE-FDD, LTE-TDD, WCDMA			
	5G NR Transmission Rate	5G SA Sub-6: - Downstream 2.4Gbps -Upstream 900 Mbps 5G NSA Sub-6: - Downstream 3.4 Gbps - Upstream 550 Mbps			
	4G LTE Transmission Rate	CAT-19 Downstream 1.6 Gbps CAT-18 Upstream 200 Mbps			
	Network Frequency Band: 5G (SA)	N1/N2/N3/N5/N7/N8/N12/N13/N14/N18/N20/N25/N26/N28/N29/N30/N38/N40/N41/N48/N66/N70/N71/N75/N76/N77/N78/N79			
	Network Frequency Band: 5G (NSA)	N1/N2/N3/N5/N7/N8/N12/N13/N14/N18/N20/N25/N26/N28/N29/N30/N38/N40/N41/N48/N66/N70/N71/N75/N76/N77/N78/N79			
	Network Frequency Band: 4G	B1/B2/B3/B4/B5/B7/B8/B12/B13/B14/B17/B18/B19/B20/B25/B26/B28/B29/B30/B32/B34/B38/B39/B40/B41/B42/B43/B46/B48/B66/B71			
	Antenna Connectors	8 × 5G antennas (SMA)	4 × 5G antennas (SMA)	8 × 5G antennas (SMA)	4 × 5G antennas (SMA)
Wi-Fi	Wi-Fi Standard	Wi-Fi 6; 802.11 a/b/g/n/ac/ax			
	Operating Frequency	2412MHz ~ 2462MHz 5180MHz ~ 5825MHz			
	Transmission Rate	2×2 MU-MIMO WiFi 2.4GHz radio, Up to 574Mbps physical data rate 2×2 MU-MIMO WiFi 5GHz radio, Up to 1210Mbps physical data rate			
	Modulation Technology	802.11 b: DSSS (DBPSK, DQPSK, CCK) 802.11 a/g/n: OFDM (BPSK, QPSK, 16-QAM, 64-QAM) 802.11 ac: OFDM (BPSK, QPSK, 16-QAM, 64-QAM, 256-QAM) 802.11 ax: OFDM (BPSK, QPSK, 16-QAM, 64-QAM, 256-QAM, 1024-QAM)			
	Antenna Connectors	2 × Dual bands Wi-Fi antennas (SMA)			
	Wi-Fi Connections	Max 512 × Wi-Fi connections (concurrently)			



XATELLITE PROX SERIES SPECIFICATION

Series		ProX			
Model		Xatellite ProX 55	Xatellite ProX 5	Xatellite ProX 55P	Xatellite ProX 5P
I/O	LAN/WAN Ports	5 × GE RJ45 Ethernet Ports, 1 × SFP port			
	SIM Options	4 × Nano SIM Trays (Double SIM, Double Pass / *Dual SIM, Single Pass, Single Standby / *Quad SIM, Double Pass, Double Standby) Support Pre-soldered eSIM	4 × Nano SIM Trays (Dual SIM, Single Pass, Single Standby) Support Pre-soldered eSIM	4 × Nano SIM Trays (Double SIM, Double Pass / *Dual SIM, Single Pass, Single Standby / *Quad SIM, Double Pass, Double Standby) Support Pre-soldered eSIM	4 × Nano SIM Trays (Dual SIM, Single Pass, Single Standby) Support Pre-soldered eSIM
	USB Ports	1 × USB 2.0 (ModBus, RS232/TTY)			
	Reset	1 × Reset / Factory Restore Button			
Operation Environment	Temperature	-30°C ~ 75°C; -40°C ~ 85°C (Extended)			
	Humidity	5% ~ 95% non-condensing			
	Ingress Protection Rating	IP41			
Storage Environment	Temperature	-40°C ~ 85°C			
Power	Input	(1) Standard DC-044A 5.5×2.1mm Jack input 24 ~ 56V DC (2) 3-pin industrial phoenix power plug 24 ~ 56V DC - 24V/2A adaptor (default, no POE out)		(1) Standard DC-044A 5.5×2.1mm Jack input 24 ~ 56V DC (2) 3-pin industrial phoenix power plug 24 ~ 56V DC - 48V/144W adaptor, 138W PoE+ output (default) Available adaptors - 48V/300W, IP65 adaptor, 150W PoE+ output (optional)	
	Consumption	12W: Dual 5G On, WiFi6 On, No SFP, No PoE output	9W: 5G On, WiFi6 On, No SFP, No PoE output	12W: Dual 5G On, WiFi6 On, No SFP, No PoE output	9W: 5G On, WiFi6 On, No SFP, No PoE output
	PoE+ Output (Max)	NIL		PoE+, 150W, 5 × PoE+ ports (Integrated GUI manageable included)	
Functions	Network Features	Support Policy-Based Routing, OSPFv2, BGP+4, MPLS, SRv6, NAT, PAT, BFD, Multi-WAN, 802.1Q VLAN, STP, RSTP, MSTP, QinQ over IP, MQTT Broker			
	Cellular	Support Frequency Locking, Network Slicing, Bridge Mode, 5G LAN			
	Security	Support SIM PIN protection, Firewall, Mac address access control, IP address access control, MACsec, Wi-Fi Encryption authentication			
	VPN	Support IPsec VPN, DMVPN, GRE, WireGuard, VxLAN, IPfiber(L2 overlay)			
	GNSS	Support GPS, Beidou, Galileo(Optional)			
	Administrator Maintenance	Support SNMP, SSH, WebUI, eBrain (Central Management)			



XATELLITE PROX SERIES SPECIFICATION

Series		ProX			
Model		Xatellite ProX 55	Xatellite ProX 5	Xatellite ProX 55P	Xatellite ProX 5P
Performance	Routing Throughput (Max)	6 Gbps			
	IPSec Throughput (Max)	AES128-SHA1: 540 Mbps AES256-SHA256: 500 Mbps			
	IPfiber Throughput (Max)	Standard Encryption (AES128-GCM-SHA256): 680Mbps Enhanced Encryption (AES256-GCM-SHA384): 500Mbps			
	MACsec Throughput (Max)	GCM-AES-128: 915 Mbps GCM-AES-256: 880 Mbps			
	*Note: Router/IPsec/MACsec/IPfiber Throughput is based on MTU 1500 bytes. Actual performance can vary across different networking environments. Figures apply to the latest hardware revision. The throughput result is tested with DHCP/Static IP.				

Series		ProX			
Model		Xatellite ProX F	Xatellite ProX FF	Xatellite ProX FP	Xatellite ProX FFP
Signature	Signature	SFP x 1	SFP x 2	SFP x 1, POE+ Out	SFP x 2, POE+ Out
	Wi-Fi	Wi-Fi 6	Wi-Fi 6	Wi-Fi 6	Wi-Fi 6
	RJ45 Ethernet Ports (LAN + WAN)	5	5	5	5
	SPF Ports (LAN or WAN)	1	2	1	2
	POE+ output	NIL	NIL	150W, 5 x PoE+ ports	150W, 5 x PoE+ ports
	Bandwidth bonding & redundancy	fixed line + fixed line	fixed line + fixed line	fixed line + fixed line	fixed line + fixed line
Hardware	CPU	64-bit Quad-Core ARMv8			
	NPU	Twelve-Threaded network processing Unit			
	Form Factor	Aluminum alloy case			
	Mounting Kit Interface	75 x 75 mm VESA mount			
Wi-Fi	Wi-Fi Standard	Wi-Fi 6; 802.11 a/b/g/n/ac/ax			
	Operating Frequency	2412MHz ~ 2462MHz 5180MHz ~ 5825MHz			
	Transmission Rate	2x2 MU-MIMO WiFi 2.4GHz radio, Up to 574Mbps physical data rate 2x2 MU-MIMO WiFi 5GHz radio, Up to 1210Mbps physical data rate			
	Modulation Technology	802.11 b: DSSS (DBPSK, DQPSK, CCK) 802.11 a/g/n: OFDM (BPSK, QPSK, 16-QAM, 64-QAM) 802.11 ac: OFDM (BPSK, QPSK, 16-QAM, 64-QAM, 256-QAM) 802.11 ax: OFDM (BPSK, QPSK, 16-QAM, 64-QAM, 256-QAM, 1024-QAM)			
	Antenna Connectors	2 x Dual bands Wi-Fi antennas (SMA)			
	Wi-Fi Connections	Max 512 x Wi-Fi connections (concurrently)			

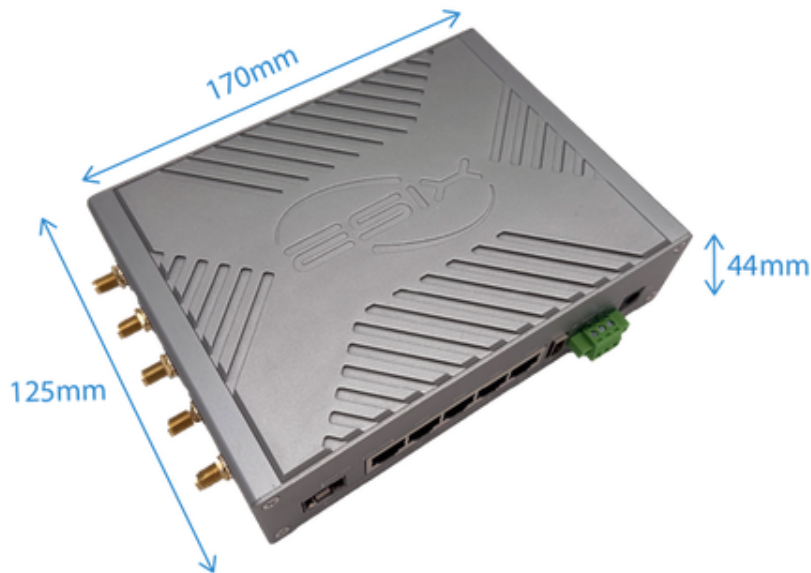
XATELLITE PROX SERIES SPECIFICATION

Series		ProX			
Model		Xatellite ProX F	Xatellite ProX FF	Xatellite ProX FP	Xatellite ProX FFP
I/O	LAN/WAN Ports	5 × GE RJ45 Ethernet Ports, 1 × SFP port	5 × GE RJ45 Ethernet Ports, 2 × SFP port	5 × GE RJ45 Ethernet Ports, 1 × SFP port	5 × GE RJ45 Ethernet Ports, 2 × SFP port
	SIM Options	NIL			
	USB Ports	1 × USB 2.0 (ModBus, RS232/TTY)			
	Reset	1 × Reset / Factory Restore Button			
Operation Environment	Temperature	-30°C ~ 75°C; -40°C ~ 85°C (Extended)			
	Humidity	5% ~ 95% non-condensing			
	Ingress Protection Rating	IP41			
Storage Environment	Temperature	-40°C ~ 85°C			
Power	Input	(1) Standard DC-044A 5.5×2.1mm Jack input 24 ~ 56V DC (2) 3-pin industrial phoenix power plug 24 ~ 56V DC - 24V/2A adaptor (default, no POE out)		(1) Standard DC-044A 5.5×2.1mm Jack input 24 ~ 56V DC (2) 3-pin industrial phoenix power plug 24 ~ 56V DC - 48V/144W adaptor, 138W PoE+ output (default) Available adaptors - 48V/300W, IP65 adaptor, 150W PoE+ output (optional)	
	Consumption	7W: WiFi6 On, No SFP, No PoE output			
	PoE+ Output (Max)	PoE+, 150W, 5 × PoE+ ports (Integrated GUI managable included)			
Functions	Network Features	Support Policy-Based Routing, OSPFv2, BGP+4, MPLS, SRv6, NAT, PAT, BFD, Multi-WAN, 802.1Q VLAN, STP, RSTP, MSTP, QinQ over IP, MQTT Broker			
	Cellular	NIL			
	Security	Support Firewall, Mac address access control, IP address access control, MACsec, Wi-Fi Encryption authentication			
	VPN	Support IPsec VPN, DMVPN, GRE, WireGuard, VxLAN, IPfiber(L2 overlay)			
	GNSS	NIL			
	Administrator Maintenance	Support SNMP, SSH, WebUI, eBrain (Central Management)			
Performance	Routing Throughput (Max)	6 Gbps			
	IPSec Throughput (Max)	AES128-SHA1: 540 Mbps AES256-SHA256: 500 Mbps			
	IPfiber Throughput (Max)	Standard Encryption (AES128-GCM-SHA256): 680Mbps Enhanced Encryption (AES256-GCM-SHA384): 500Mbps			
	MACsec Throughput (Max)	GCM-AES-128: 915 Mbps GCM-AES-256: 880 Mbps			
	*Note: Router/IPsec/MACsec/IPfiber Throughput is based on MTU 1500 bytes. Actual performance can vary across different networking environments. Figures apply to the latest hardware revision. The throughput result is tested with DHCP/Static IP.				

XATELLITE PROX SERIES SPECIFICATION



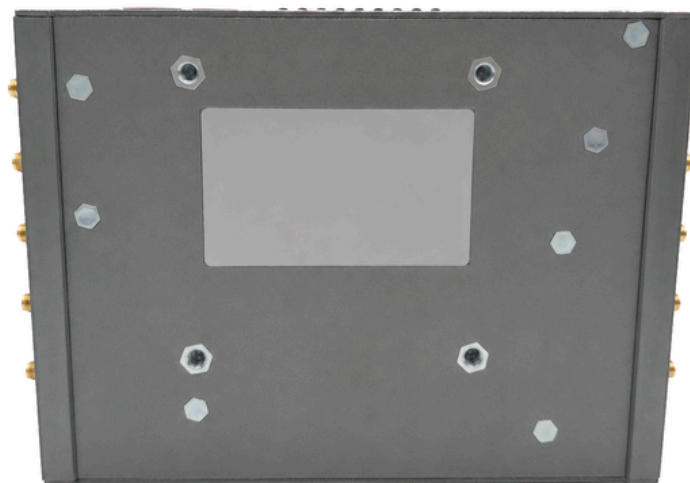
Series	ProX			
Model	Xatellite ProX 55	Xatellite ProX 5	Xatellite ProX 55P	Xatellite ProX 5P
	Xatellite ProX F	Xatellite ProX FF	Xatellite ProX FP	Xatellite ProX FFP



Dimension:
170 × 125 × 44mm

Weight (body):
≈ 934g

There might be colour aberration between picture and each existence



Suitable for 75 × 75 mm VESA mount kit

ORDERING INFORMATION

SKU	Packing List
Xatellite ProX 5 SKU: X7250-012-48WD	<ul style="list-style-type: none"> - Xatellite ProX router body - Single 5G Module inside - SMA Wi-Fi Antenna (EA-S-W) x 2 - SMA 5G/4G/GNSS Antenna (EA-S-5) x 4 - Phoenix male terminal x 1 - AC/DC Adapter, 24V DC/2A DC Jack (EP-D-24D) (non POE out) x 1
Xatellite ProX 55 SKU: X7255-012-48WD	<ul style="list-style-type: none"> - Xatellite ProX router body - Dual 5G Modules inside - SMA Wi-Fi Antenna (EA-S-W) x 2 - SMA 5G/4G/GNSS Antenna (EA-S-5) x 8 - Phoenix male terminal x 1 - AC/DC Adapter, 24V DC/2A DC Jack (EP-D-24D) (non POE out) x 1
Xatellite ProX 5P SKU: X7250-P12-144WD	<ul style="list-style-type: none"> - Xatellite ProX router body - Single 5G Module inside - SMA Wi-Fi Antenna (EA-S-W) x 2 - SMA 5G/4G/GNSS Antenna (EA-S-5) x 4 - Phoenix male terminal x 1 - AC/DC Adapter, 48V DC/ProX 144W - DC Jack (EP-D-144D)
Xatellite ProX 55P SKU: X7255-P12-144WD	<ul style="list-style-type: none"> - Xatellite ProX router body - Dual 5G Modules inside - SMA Wi-Fi Antenna (EA-S-W) x 2 - SMA 5G/4G/GNSS Antenna (EA-S-5) x 8 - Phoenix male terminal x 1 - AC/DC Adapter, 48V DC/ProX 144W - DC Jack (EP-D-144D) x 1
Xatellite ProX F SKU: X7200-012-48WD-S1	<ul style="list-style-type: none"> - Xatellite ProX router body - SMA Wi-Fi Antenna (EA-S-W) x 2 - Phoenix male terminal x 1 - AC/DC Adapter, 24V DC/2A DC Jack (EP-D-24D) (non POE out) x 1 * SFP transceiver is not included.
Xatellite ProX FF SKU: X7200-012-48WD-S2	<ul style="list-style-type: none"> - Xatellite ProX router body - SMA Wi-Fi Antenna (EA-S-W) x 2 - Phoenix male terminal x 1 - AC/DC Adapter, 24V DC/2A DC Jack (EP-D-24D) (non POE out) x 1 * SFP transceiver is not included.
Xatellite ProX FP SKU: X7200-P12-144WD-S1	<ul style="list-style-type: none"> - Xatellite ProX router body - SMA Wi-Fi Antenna (EA-S-W) x 2 - Phoenix male terminal x 1 - AC/DC Adapter, 48V DC/ProX 144W - DC Jack (EP-D-144D) x 1 * SFP transceiver is not included.
Xatellite ProX FFP SKU: X7200-P12-144WD-S2	<ul style="list-style-type: none"> - Xatellite ProX router body - SMA Wi-Fi Antenna (EA-S-W) x 2 - Phoenix male terminal x 1 - AC/DC Adapter, 48V DC/ProX 144W - DC Jack (EP-D-144D) x 1 * SFP transceiver is not included.

*Any special requirements, please contact to sales representative.

ESIX STANDARD WARRANTY POLICY



STANDARD HARDWARE/SOFTWARE WARRANTY POLICY

eSIX warrants solely to the original end-user purchaser ("Purchaser") that hardware ("Hardware") purchased from eSIX or our Authorized Partners will be free from defects in materials and workmanship when used within the limits set forth in the documentation (data sheet and user manual) for a period of twelve (12) months, starting from the time of shipment of the Hardware, or the date the Hardware was purchased according to sales registration, whichever is later. (If a 36-month warranty is required, please contact the sales representative.)

This limited warranty is non-transferable and extends only to the original end-user purchaser who acquired the Hardware from an Authorized Partner who has the right to sell in the end-user's territory. eSIX explicitly disclaims any warranty obligations for Hardware that is sold outside of the assigned territory of an Authorized Partner. Your exclusive remedy and eSIX' entire liability under this limited warranty will be for eSIX, at its option, to (a) repair the Hardware with new or refurbished parts, or (b) replace the Hardware with a reasonably available equivalent new or refurbished eSIX Hardware. Any repaired or replacement Hardware will be warranted for the remainder of the original Warranty Period or thirty (30) days, whichever is longer. All Hardware and parts that are replaced become the property of eSIX.

EXCLUSION AND LIMITATIONS

This limited warranty does not apply if: (a) the Hardware assembly seal has been removed or damaged, (b) the Hardware has been altered or modified, except by eSIX, (c) the Hardware damage was caused by use with non eSIX Hardware, (d) the Hardware has not been installed, operated, repaired, or maintained in accordance with instructions supplied by eSIX, (e) the Hardware has been subjected to abnormal physical or electrical stress, abuse, misuse, negligence, or accident, (f) the serial number on the Hardware has been altered, defaced, or removed, (g) the Hardware damage was caused by lightning, power surges or wrong voltage usage, or (h) the Hardware is supplied or licensed for beta, evaluation, promotional, testing or demonstration purposes for which eSIX does not charge a purchase price or fee.

ALL SOFTWARE PROVIDED BY ESIX ("SOFTWARE") WITH OR WITHOUT THE HARDWARE, WHETHER FACTORY LOADED ON THE HARDWARE, CONTAINED ON MEDIA ACCOMPANYING THE HARDWARE OR DOWNLOADED FROM OUR WEBSITE, IS PROVIDED "AS IS" WITHOUT WARRANTY OF ANY KIND.

Without limiting the foregoing, eSIX does not warrant that the operation of the Hardware or Software will be uninterrupted or error free. Also, due to the continual development of new techniques for intruding upon and attacking networks, eSIX does not warrant that the Hardware, Software or any equipment, system or network on which the Hardware or Software is used will be free of vulnerability to intrusion or attack. The Hardware and Software may include or be bundled with third party software or service offerings. This limited warranty shall not apply to such third party software or service offerings. This limited warranty does not guarantee any continued availability of a third party's service for which this Hardware's or Software's use or operation may require.