

# Xatellite B Series



## Xatellite B Industrial Grade Indoor CPE

- B1 edition: 4G
- B2 edition: Dual 4G
- B5 edition: 5G
- B54 edition: Combo 5G + 4G
- B55 edition: Dual 5G

\*optional build-in PoE+ output



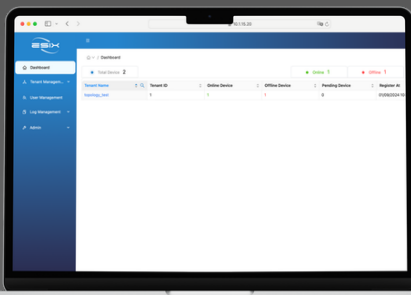
### Across network Overlay pure L2 or L3 tunnel

Pure L2 or L3 tunnels covered by the network have the advantages of improving efficiency.

### Aluminum Alloy Cover

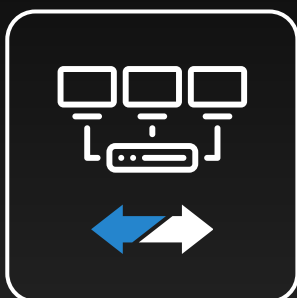
Designed for use in various complex indoor industrial environments, it provides high-performance connectivity to end devices.

## eBrain (Central Management)



A cloud-based, centralized device management platform with multi-tenant support, enabling efficient management of devices across multiple locations and branches.

## SD-WAN Ready



Enhance your SD-WAN deployment with the power of Multi Ethernet WANs, Dual 4G, 5G&4G combo, and Wi-Fi WAN. You can leverage all available WAN connections to ensure uninterrupted connectivity and keep your business operations running smoothly.

## Network Bonding, Failover

Bonds multiple networks together, including Multi-WAN capabilities, to create higher bandwidth. It seamlessly switches between connections within milliseconds for low latency and safe operation.



## Use Cases



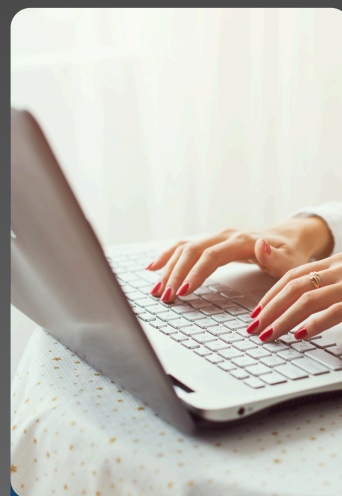
Carpark,  
Charging Station



POS, Kiosk



IOT,  
Remote Surveillance



Home Office,  
Mobile Office

# XATELLITE B SERIES SPECIFICATION



Series		B				
Model		Xatellite B1	Xatellite B2	Xatellite B5	Xatellite B54	Xatellite B55
Summary	Mobile	4G	4G + 4G	5G	5G + 4G	5G + 5G
	Wi-Fi	Wi-Fi 6	Wi-Fi 6	Wi-Fi 6	Wi-Fi 6	NIL
	Ethernet Ports (LAN + WAN)	5	5	5	5	5
	POE+ output	NIL	NIL	NIL	NIL	NIL
	Bandwidth bonding & redundancy	4G + fixed line	4G + 4G + fixed line	5G + fixed line	5G + 4G + fixed line	5G + 5G + fixed line
Hardware	CPU	64-bit Dual-Core ARM				
	NPU	Independent network processing unit				
	Form Factor	Aluminum alloy case				
	Mounting Kit Interface	75 × 75 mm VESA mount				
Cellular Network	Communication Standard	3GPP Release 12 LTE-A, operation 700 MHz to 3800 MHz		3GPP Release 16 NSA/SA, operation sub-6 Ghz		
	Application Network	LTE-FDD, LTE-TDD, WCDMA		5G NR SA, 5G NR NSA, LTE-FDD, LTE-TDD, WCDMA		
	5G NR Transmission Rate	NIL		5G SA Sub-6: - Downstream 2.4Gbps - Upstream 900 Mbps 5G NSA Sub-6: - Downstream 3.4 Gbps - Upstream 550 Mbps		
	4G LTE Transmission Rate	CAT-6 Downstream 300 Mbps CAT-6 Upstream 50 Mbps		CAT-19 Downstream 1.0 Gbps CAT-18 Upstream 200 Mbps		
	Network Frequency Band: 5G(SA)	NIL		N1/2/3/5/7/8/12/13/14/18/20/25/26/28/29/30/38/40/41/48/66/70/71/75/76/77/78/79		
	Network Frequency Band: 5G(NSA)	NIL		N1/2/3/5/7/8/12/13/14/18/20/25/26/28/29/30/38/40/41/48/66/70/71/75/76/77/78/79		
	Network Frequency Band: 4G	B1/2/3/4/5/7/8/12/13/14/17/18/19/20/25/26/28/29/30/32/34/38/39/40/41/42/43/46(LAA)/48(CBRS)/66/71				
	Antenna Connectors	2 × 5G/4G antennas (SMA)	4 × 5G/4G antennas (SMA)	4 × 5G/4G antennas (SMA)	6 × 5G/4G antennas (SMA)	8 × 5G/4G antennas (SMA)
Wi-Fi	Wi-Fi Standard	Wi-Fi 6; 802.11 a/b/g/n/ac/ax				NIL
	Operating Frequency	2412MHz ~ 2462MHz 5180MHz ~ 5825MHz				
	Transmission Rate	2×2 MU-MIMO WiFi 2.4GHz radio: Up to 574Mbps physical data rate 2×2 MU-MIMO WiFi 5GHz radio: Up to 1210Mbps physical data rate				
	Modulation Technology	802.11 b: DSSS (DBPSK, QPSK, CCK) 802.11 a/g/n: OFDM (BPSK, QPSK, 16-QAM, 64-QAM) 802.11 ac: OFDM (BPSK, QPSK, 16-QAM, 64-QAM, 256-QAM) 802.11 ax: OFDM (BPSK, QPSK, 16-QAM, 64-QAM, 256-QAM, 1024-QAM)				
	Antenna Connectors	2 × Dual bands Wi-Fi antennas (SMA)				
	Wi-Fi Connections	Max 128 × Wi-Fi connections (concurrently)				

# XATELLITE B SPECIFICATION



Series		B				
Model		Xatellite B1	Xatellite B2	Xatellite B5	Xatellite B54	Xatellite B55
I/O	LAN/WAN Ports	1 × GE RJ45 WAN port, 4 × GE RJ45 LAN ports (One of RJ45 LAN ports is POE+ input)				1 × GE RJ45 WAN port, 4 × GE RJ45 LAN ports
	SIM Options	2 × Nano Sim slots (Single Pass, Single Standby)	2 × Nano Sim slots (Double Pass)	2 × Nano Sim slots (Single Pass, Single Standby)	2 × Nano Sim slots (Double Pass)	
	USB Ports	1 × USB 3.0 port (ModBus, RS232/TTY)				
	Reset	1 × Reset / Factory Restore Button				
Operation Environment	Temperature	-20°C ~ 70°C				
	Humidity	5% ~ 95% non-condensing				
	Ingress Protection Rating	IP41				
Storage Environment	Temperature	-40°C ~ 85°C				
Power	Input	(1) Standard DC-044A 5.5×2.1mm DC Jack input 24 ~ 56V DC (2) 3 pin industrial phoenix power plug 24 ~ 56V DC (3) IEEE 802.3 AT PoE+ Available adaptors - 24V/2A adaptor (default) - POE+ injector (optional)				(1) Standard DC-044A 5.5×2.1mm DC Jack input 24V~ 56V DC (2) 3 pin industrial phoenix power plug 24 ~ 56V DC Available adaptors - 24V/2A adaptor (default)
	Consumption	6.0 W: WiFi6 Off, 5G module On (no data flow) 11.5 W: WiFi6 On, 5G module On (iperf3 via WiFi6 & 5G Modem)				
Functions	Network Features	Support OSPFv2, Policy-Based Routing, NAT, PAT, BFD, Multi-WAN, 802.1Q VLAN, VxLAN, STP, RSTP, MSTP, QinQ over IP, MQTT Broker				
	Cellular	Support Frequency Locking, Bridge Mode		Support Frequency Locking, Network Slicing, Bridge Mode, 5G LAN		
	Security	Support SIM PIN protection, Firewall, Mac Address Access Control, IP Address Access Control, MACsec, Wi-Fi Encryption authentication				Support SIM PIN protection, Firewall, Mac Address Access Control, IP Address Access Control, MACsec
	VPN	Support IPsec VPN, GRE, WireGuard, EVPN-VXLAN, IPfiber(L2 overlay)				
	GNSS	Support GPS, Beidou, Galileo(Optional)				
	Administrator Maintenance	Support SNMP, SSH, WebUI, eBrain (Central Management)				
Performance	Router Throughput (Max)	2 Gbps				
	IPSec Throughput (Max)	AES-128-SHA1: 70 Mbps AES-256-SHA256: 60 Mbps				
	IPfiber Throughput (Max)	Standard Encryption (AES-128-GCM-SHA256): 140 Mbps Enhanced Encryption (AES-256-GCM-SHA384): 110 Mbps				
	MACsec Throughput (Max)	GCM-AES-128: 72 Mbps GCM-AES-256: 65 Mbps				
	*Note: Router/IPsec/MACsec/IPfiber Throughput is based on MTU 1500 bytes. Actual performance can vary across different networking environments. Figures apply to the latest hardware revision. The throughput result is tested with DHCP/Static IP.					

# XATELLITE B SERIES SPECIFICATION



Series		B						
Model	Xatellite B0P	Xatellite B1P	Xatellite B2P	Xatellite B5P	Xatellite B54P	Xatellite B55P		
Summary	Mobile	NIL	4G	4G + 4G	5G	5G + 4G	5G + 5G	
	Wi-Fi	Wi-Fi 6	Wi-Fi 6	Wi-Fi 6	Wi-Fi 6	Wi-Fi 6	NIL	
	Ethernet Ports (LAN + WAN)	5	5	5	5	5	5	
	POE+ output	150W: 5 × Ports PoE+			150W: 5 × Ports PoE+			
	Bandwidth bonding & redundancy	4G + fixed line	4G + fixed line	4G + 4G + fixed line	5G + fixed line	5G + 4G + fixed line	5G + 5G + fixed line	
Hardware	CPU	64-bit Dual-Core ARM						
	NPU	Independent network processing unit						
	Form Factor	Aluminum alloy case						
	Mounting Kit Interface	75 × 75 mm VESA mount						
Cellula Network	Communication Standard	NIL	3GPP Release 12 LTE-A, operation 700 MHz to 3800 MHz		3GPP Release 16 NSA/SA, operation sub-6 Ghz			
	Application Network	NIL	LTE-FDD, LTE-TDD, WCDMA		5G NR SA, 5G NR NSA, LTE-FDD, LTE-TDD, WCDMA			
	5G NR Transmission Rate	NIL	NIL		5G SA Sub-6: - Downstream 2.4Gbps - Upstream 900 Mbps 5G NSA Sub-6: - Downstream 3.4 Gbps - Upstream 550 Mbps			
	4G LTE Transmission Rate	NIL	CAT-6 Downstream 300 Mbps CAT-6 Upstream 50 Mbps		CAT-19 Downstream 1.0 Gbps CAT-18 Upstream 200 Mbps			
	Network Frequency Band: 5G(SA)	NIL		N1/2/3/5/7/8/12/13/14/18/20/25/26/28/29/30/38/40/41/48/66/70/71/75/76/77/78/79				
	Network Frequency Band: 5G(NSA)	NIL		N1/2/3/5/7/8/12/13/14/18/20/25/26/28/29/30/38/40/41/48/66/70/71/75/76/77/78/79				
	Network Frequency Band: 4G	NIL	B1/2/3/4/5/7/8/12/13/14/17/18/19/20/25/26/28/29/30/32/34/38/39/40/41/42/43/46(LAA)/48(CBRS)/66/71					
	Antenna Connectors	NIL	2 × 5G/4G antennas (SMA)	4 × 5G/4G antennas (SMA)	4 × 5G/4G antennas (SMA)	6 × 5G/4G antennas (SMA)	8 × 5G/4G antennas (SMA)	
Wi-Fi	Wi-Fi Standard	NIL	Wi-Fi 6; 802.11 a/b/g/n/ac/ax					NIL
	Operating Frequency		2412MHz ~ 2462MHz & 5180MHz ~ 5825MHz					
	Transmission Rate		2x2 MU-MIMO WiFi 2.4GHz radio: Up to 574Mbps physical data rate 2x2 MU-MIMO WiFi 5GHz radio: Up to 1210Mbps physical data rate					
	Modulation Technology		802.11 b: DSSS (DBPSK, DQPSK, CCK) 802.11 a/g/n: OFDM (BPSK, QPSK, 16-QAM, 64-QAM) 802.11 ac: OFDM (BPSK, QPSK, 16-QAM, 64-QAM, 256-QAM) 802.11 ax: OFDM (BPSK, QPSK, 16-QAM, 64-QAM, 256-QAM, 1024-QAM)					
	Antenna Connectors		2 × Dual bands Wi-Fi antennas (SMA)					
	Wi-Fi Connections:		Max 128 × Wi-Fi connections (concurrently)					

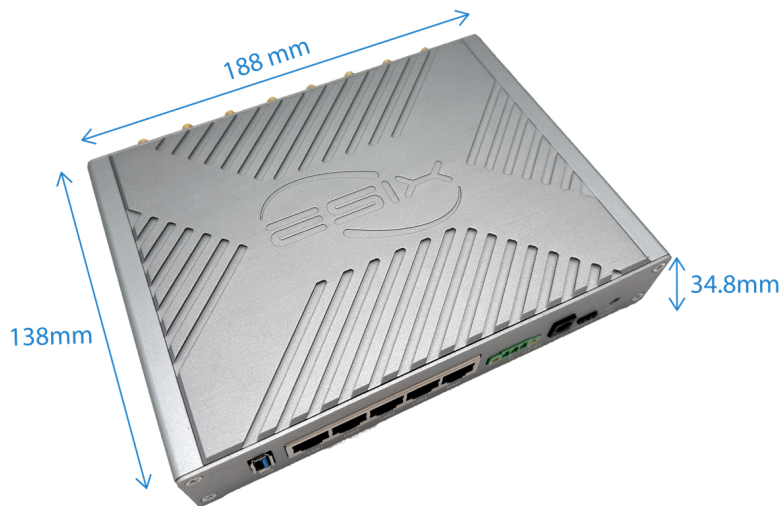
# XATELLITE B SPECIFICATION

Series	B						
Model	Xatellite B0P	Xatellite B1P	Xatellite B2P	Xatellite B5P	Xatellite B54P	Xatellite B55P	
I/O	LAN/WAN Ports	1 × GE RJ45 WAN/LAN port; 4 × GE RJ45 LAN ports (All of the RJ45 LAN ports are POE+ output)					
	SIM Options	NIL	2 × Nano Sim slots (Single Pass, Single Standby)	2 × Nano Sim slots (Double Pass)	2 × Nano Sim slots (Single Pass, Single Standby)	2 × Nano Sim slots (Double Pass)	2 × Nano Sim slots (Double Pass)
	USB Ports	1 × USB 3.0 port (ModBus, RS232/TTY)					
	Reset	1 × Reset / Factory Restore Button					
Operation Environment	Temperature	-20°C ~ 70°C					
	Humidity	5% ~ 95% non-condensing					
	Ingress Protection Rating	IP41					
Storage Environment	Temperature	-40°C ~ 85°C					
Power	Input	(1) Standard DC-044A 5.5×2.1mm DC Jack input 24 ~ 56V DC (2) 3-pin industrial phoenix power plug 24 ~ 56V DC Available adaptors (OPTIONAL) - 24V/2A adaptor, no PoE output - 48V/144W adaptor, 138W PoE+ output - 48V/300W, IP65 adaptor, 150W PoE+ output					
	Consumption	6.0W: WiFi6 Off (no data flow)	6.0 W: WiFi6 Off, 4G module On (no data flow) 10.0 W: WiFi6 On, 4G module On (iperf3 via WiFi6 & 5G Modem)	6.0 W: WiFi6 Off, 5G module On (no data flow) 11.5 W: WiFi6 On, 5G module On (iperf3 via WiFi6 & 5G Modem)			
	PoE+ Output (Max)	150W: 5 × Ports PoE+ (Integrated GUI manageable included)					
Functions	Network Features	Support Policy-Based Routing, OSPFv2, NAT, PAT, BFD, Multi-WAN, 802.1Q VLAN, VxLAN, STP, RSTP, MSTP, QinQ over IP, MQTT Broker					
	Cellular	NIL	Support Frequency Locking, Bridge Mode	Support Frequency Locking, Network Slicing, Bridge Mode, 5G LAN			
	Security	Support Firewall, Mac address access control, IP address access control, MACsec	Support SIM PIN protection, Firewall, Mac Address Access Control, IP Address Access Control, MACsec, Wi-Fi Encryption authentication	Support SIM PIN protection, Firewall, Mac Address Access Control, IP Address Access Control, MACsec, Wi-Fi Encryption authentication			Support SIM PIN protection, Firewall, Mac Address Access Control, IP Address Access Control, MACsec
	VPN	Support IPsec VPN, GRE, WireGuard, EVPN-VXLAN, IPfiber(L2 overlay)					
	GNSS	NIL	Support GPS, Beidou, Galileo(Optional)				
	Administrator Maintenance	Support SNMP, SSH, WebUI, eBrain (Central Management)					

# XATELLITE B SPECIFICATION



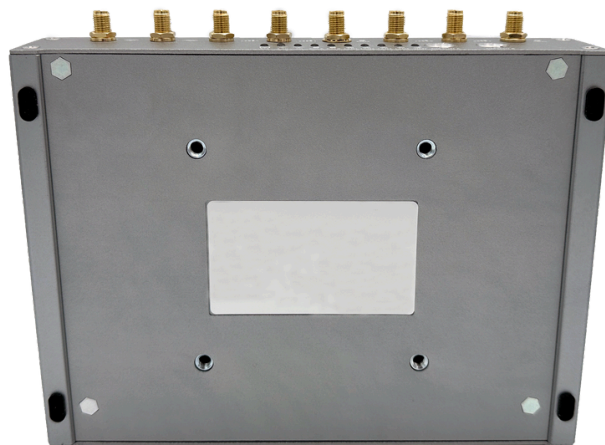
Series		B					
Model		Xatellite B0P	Xatellite B1P	Xatellite B2P	Xatellite B5P	Xatellite B54P	Xatellite B55P
Performance	Routing Throughput (Max)	2 Gbps					
	IPSec Throughput (Max)	AES-128-SHA1: 70 Mbps AES-256-SHA256: 60 Mbps					
	IPfiber Throughput (Max)	Standard Encryption (AES-128-GCM-SHA256): 140 Mbps Enhanced Encryption (AES-256-GCM-SHA384): 110 Mbps					
	MACsec Throughput (Max)	GCM-AES-128: 72 Mbps GCM-AES-256: 65 Mbps					
*Note: Router/IPsec/MACsec/IPfiber Throughput is based on MTU 1500 bytes. Actual performance can vary across different networking environments. Figures apply to the latest hardware revision. The throughput result is tested with DHCP/Static IP.							



**Dimension:**  
188 x 138 x 34.8mm

**Weight (body):**  
≈ 930g

There might be colour aberration between picture and each existence



Suitable for 75 x 75 mm VESA mount kit

## ORDERING INFORMATION

SKU	Packing List
<p>X3540-132-48WD (B1: Single 4G edition)</p>	<p>SKU: X3540-132-48WD</p> <ul style="list-style-type: none"> <li>- Xatellite B router body</li> <li>- Single 4G Module inside</li> <li>- SMA Wi-Fi Antenna (EA-S-W) x 2</li> <li>- SMA 5G/4G/GNSS Antenna (EA-S-5) x 2</li> <li>- AC/DC Adapter, 24V DC/2A - DC Jack (EP-D-24D) x 1</li> </ul> <p>*PoE+ Injector is not included...</p>
<p>X3544-132-48WD (B2: Dual 4G edition)</p>	<p>SKU:X3544-132-48WD</p> <ul style="list-style-type: none"> <li>- Xatellite B router body</li> <li>- Dual 4G Modules inside</li> <li>- SMA Wi-Fi Antenna (EA-S-W) x 2</li> <li>- SMA 5G/4G/GNSS Antenna (EA-S-5) x 4</li> <li>- AC/DC Adapter, 24V DC/2A - DC Jack (EP-D-24D) x 1</li> </ul> <p>*PoE+ Injector is not included.</p>
<p>X3550-132-48WD (B5: Single 5G edition)</p>	<p>SKU: X3550-132-48WD</p> <ul style="list-style-type: none"> <li>- Xatellite B router body</li> <li>- Single 5G Module inside</li> <li>- SMA Wi-Fi Antenna (EA-S-W) x 2</li> <li>- SMA 5G/4G/GNSS Antenna (EA-S-5) x 4</li> <li>- AC/DC Adapter, 24V DC/2A - DC Jack (EP-D-24D) x 1</li> </ul> <p>*PoE+ Injector is not included.</p>
<p>X3554-132-48WD (B54: 5G + 4G combo edition)</p>	<p>SKU: X3554-132-48WD</p> <ul style="list-style-type: none"> <li>- Xatellite B router body</li> <li>- Single 5G Module &amp; single 4G Module inside</li> <li>- SMA Wi-Fi Antenna (EA-S-W) x 2</li> <li>- SMA 5G/4G/GNSS Antenna (EA-S-5) x 6</li> <li>- AC/DC Adapter, 24V DC/2A - DC Jack (EP-D-24D) x 1</li> </ul> <p>*PoE+ Injector is not included.</p>
<p>X3555-132-48WD (B55: Dual 5G edition)</p>	<p>SKU:X3555-132-48WD</p> <ul style="list-style-type: none"> <li>- Xatellite B router body</li> <li>- Dual 5G Modules inside</li> <li>- SMA 5G/4G/GNSS Antenna (EA-S-5) x 8</li> <li>-AC/DC Adapter, 24V DC/2A - DC Jack (EP-D-24D) x 1</li> </ul>

## ORDERING INFORMATION

SKU	Packing List
<p>X3500-P32-144WD-NW (B0P: POE+ output Router edition)</p>	<p>SKU: X3500-P32-144WD-NW</p> <ul style="list-style-type: none"> <li>- Xatellite B router body</li> <li>- Buildin PoE+ out board</li> <li>- Phoenix male terminal × 1</li> <li>- AC/DC Adapter, 48V DC/Max 144W - DC Jack (EP-D-144D) × 1</li> </ul>
<p>X3540-P32-144WD (B1P: Single 4G &amp; POE+ output edition)</p>	<p>SKU: X3540-P32-144WD</p> <ul style="list-style-type: none"> <li>- Xatellite B router body</li> <li>- Buildin PoE+ out board</li> <li>- Single 4G Module inside</li> <li>- Phoenix male terminal × 1</li> <li>- SMA Wi-Fi Antenna (EA-S-W) × 2</li> <li>- SMA 5G/4G/GNSS Antenna (EA-S-5) × 2</li> <li>- AC/DC Adapter, 48V DC/Max 144W DC Jack (EP-D-144D) × 1</li> </ul>
<p>X3544-P32-144WD (B2P: Dual 4G &amp; POE+ output edition)</p>	<p>SKU: X3544-P32-144WD</p> <ul style="list-style-type: none"> <li>- Xatellite B router body</li> <li>- Buildin PoE+ out board</li> <li>- Dual 4G Modules inside</li> <li>- Phoenix male terminal × 1</li> <li>- SMA Wi-Fi Antenna (EA-S-W) × 2</li> <li>- SMA 5G/4G/GNSS Antenna (EA-S-5) × 4</li> <li>- AC/DC Adapter, 48V DC/Max 144W DC Jack (EP-D-144D) × 1</li> </ul>
<p>X3550-P32-144WD (B5P: Single 5G &amp; POE+ output edition)</p>	<p>SKU: X3550-P32-144WD</p> <ul style="list-style-type: none"> <li>- Xatellite B router body</li> <li>- Buildin PoE+ out board</li> <li>- Single 5G Module inside</li> <li>- Phoenix male terminal × 1</li> <li>- SMA Wi-Fi Antenna (EA-S-W) × 2</li> <li>- SMA 5G/4G/GNSS Antenna (EA-S-5) × 4</li> <li>- AC/DC Adapter, 48V DC/Max 144W DC Jack (EP-D-144D) × 1</li> </ul>
<p>X3554-P32-144WD (B54P: 5G + 4G combo &amp; POE+ output edition)</p>	<p>SKU: X3554-P32-144WD</p> <ul style="list-style-type: none"> <li>- Xatellite B router body</li> <li>- Buildin PoE+ out board</li> <li>- Single 5G Module &amp; Single 4G Module inside</li> <li>- Phoenix male terminal × 1</li> <li>- SMA Wi-Fi Antenna (EA-S-W) × 2</li> <li>- SMA 5G/4G/GNSS Antenna (EA-S-5) × 6</li> <li>- AC/DC Adapter, 48V DC/Max 144W (EP-D-144D) DC Jack × 1</li> </ul>
<p>X3555-P32-144WD (B55P: Dual 5G &amp; POE+ output edition)</p>	<p>SKU: X3555-P32-144WD</p> <ul style="list-style-type: none"> <li>- Xatellite B router body</li> <li>- Buildin PoE+ out board</li> <li>- Dual 5G Modules inside</li> <li>- Phoenix male terminal × 1</li> <li>- SMA 5G/4G/GNSS Antenna (EA-S-5) × 8</li> <li>- AC/DC Adapter, 48V DC/Max 144W (EP-D-144D) DC Jack × 1</li> </ul>

## ORDERING INFORMATION

Accessories for B1, B2, B5, B54, B55	
EP-D-24D	AC/DC Adapter, 24V DC/2A - DC Jack (1 meter)
EP-D-24P	AC/DC Adapter, 24V DC/2A - Phoenix block (1 meter)
EP-P-30R	PoE+ Injector 30W
EA-4M-2	External Waterproof 4G Mushroom Antenna, 2 Meters (SMA x 2)
EA-4M-3	External Waterproof 4G Mushroom Antenna, 3 Meters (SMA x 2)
EA-4S-2	External Waterproof 4G Suction Cup Antenna, 2 Meters (SMA x 1)
EA-5M-2	External Waterproof 5G Mushroom Antenna, 2 Meters (SMA x 4)
EA-5M-3	External Waterproof 5G Mushroom Antenna, 3 Meters (SMA x 4)
EA-S-W	SMA Wi-Fi Antenna
EA-S-5	SMA 5G/4G/GNSS Antenna
EI-V75-W	VESA 75 x 75 mm Wall Mount kit
EI-V75-P	VESA 75 x 75 mm Post Mount kit
EO-UTT	USB to TTL (Xatellite console cable)

Accessories for B0P, B1P, B2P, B5P, B54P, B55P	
EP-D-144P	AC/DC Adapter, 48V DC/Max 144W - Phoenix block (1.5 meters)
EP-D-144D	AC/DC Adapter, 48V DC/Max 144W - DC Jack (1.5 meters)
EA-4M-2	External Waterproof 4G Mushroom Antenna, 2 Meters (SMA x 2)
EA-4M-3	External Waterproof 4G Mushroom Antenna, 3 Meters (SMA x 2)
EA-4S-2	External Waterproof 4G Suction Cup Antenna, 2 Meters (SMA x 1)
EA-5M-2	External Waterproof 5G Mushroom Antenna, 2 Meters (SMA x 4)
EA-5M-3	External Waterproof 5G Mushroom Antenna, 3 Meters (SMA x 4)
EA-S-W	SMA Wi-Fi Antenna
EA-S-5	SMA 5G/4G/GNSS Antenna
EW-RJ45-S	RJ45-to-SFP Waterproof Connector
EI-V75-W	VESA 75 x 75 mm Wall Mount kit
EI-V75-P	VESA 75 x 75 mm Post Mount kit
EO-UTT	USB to TTL (Xatellite console cable)

\*Any special requirements, please contact to sales representative.

# ESIX STANDARD WARRANTY POLICY

---



## STANDARD HARDWARE/SOFTWARE WARRANTY POLICY

eSIX warrants solely to the original end-user purchaser ("Purchaser") that hardware ("Hardware") purchased from eSIX or our Authorized Partners will be free from defects in materials and workmanship when used within the limits set forth in the documentation (data sheet and user manual) for a period of twelve (12) months, starting from the time of shipment of the Hardware, or the date the Hardware was purchased according to sales registration, whichever is later. (If a 36-month warranty is required, please contact the sales representative.)

This limited warranty is non-transferable and extends only to the original end-user purchaser who acquired the Hardware from an Authorized Partner who has the right to sell in the end-user's territory. eSIX explicitly disclaims any warranty obligations for Hardware that is sold outside of the assigned territory of an Authorized Partner. Your exclusive remedy and eSIX' entire liability under this limited warranty will be for eSIX, at its option, to (a) repair the Hardware with new or refurbished parts, or (b) replace the Hardware with a reasonably available equivalent new or refurbished eSIX Hardware. Any repaired or replacement Hardware will be warranted for the remainder of the original Warranty Period or thirty (30) days, whichever is longer. All Hardware and parts that are replaced become the property of eSIX.

## EXCLUSION AND LIMITATIONS

This limited warranty does not apply if: (a) the Hardware assembly seal has been removed or damaged, (b) the Hardware has been altered or modified, except by eSIX, (c) the Hardware damage was caused by use with non eSIX Hardware, (d) the Hardware has not been installed, operated, repaired, or maintained in accordance with instructions supplied by eSIX, (e) the Hardware has been subjected to abnormal physical or electrical stress, abuse, misuse, negligence, or accident, (f) the serial number on the Hardware has been altered, defaced, or removed, (g) the Hardware damage was caused by lightning, power surges or wrong voltage usage, or (h) the Hardware is supplied or licensed for beta, evaluation, promotional, testing or demonstration purposes for which eSIX does not charge a purchase price or fee.

ALL SOFTWARE PROVIDED BY ESIX ("SOFTWARE") WITH OR WITHOUT THE HARDWARE, WHETHER FACTORY LOADED ON THE HARDWARE, CONTAINED ON MEDIA ACCOMPANYING THE HARDWARE OR DOWNLOADED FROM OUR WEBSITE, IS PROVIDED "AS IS" WITHOUT WARRANTY OF ANY KIND.

Without limiting the foregoing, eSIX does not warrant that the operation of the Hardware or Software will be uninterrupted or error free. Also, due to the continual development of new techniques for intruding upon and attacking networks, eSIX does not warrant that the Hardware, Software or any equipment, system or network on which the Hardware or Software is used will be free of vulnerability to intrusion or attack. The Hardware and Software may include or be bundled with third party software or service offerings. This limited warranty shall not apply to such third party software or service offerings. This limited warranty does not guarantee any continued availability of a third party's service for which this Hardware's or Software's use or operation may require.