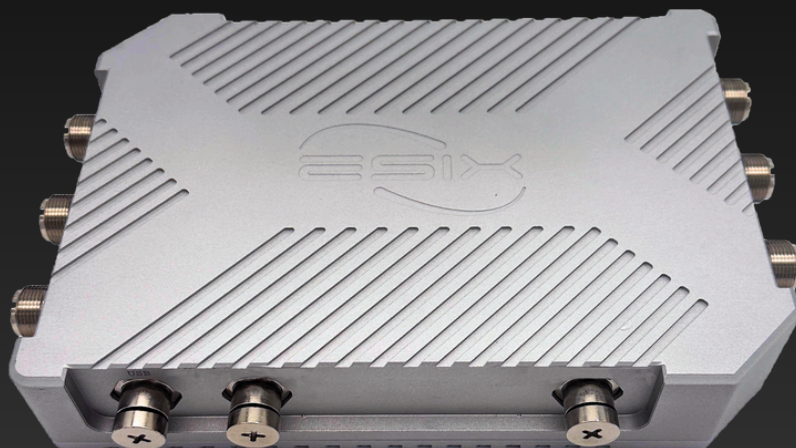


Xatellite+

IP67 Industrial Grade Outdoor 5G CPE



BGP4+ Available

With the powerful Quad-Core ARM V8 CPU and Dedicated Network Processing Unit Acceleration in place, BGP4+ is now at your disposal.

Across network Overlay pure L2 or L3 tunnel

Pure L2 or L3 tunnels covered by the network have the advantages of improving efficiency.

Aviation Grade M12 POE in

It ensures reliable power delivery and connectivity in harsh conditions, and enables outdoor and industrial settings, providing a robust networking needs in challenging environments.

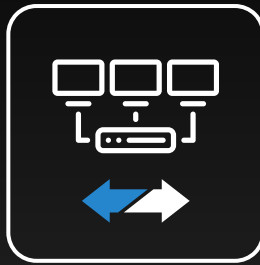


Aluminum Alloy Cover and IP67 Waterproof

Used in industrial settings within harsher environments, providing durability and protection.



SD-WAN Ready



Enhance your SD-WAN deployment with the power of Multi Ethernet WANs. You can leverage all available WAN connections to ensure uninterrupted connectivity and keep your business operations running smoothly.

Multi WANs Load Balancing

Multiple WANs create higher bandwidth and Failover between connections within milliseconds for low latency and safe operation.

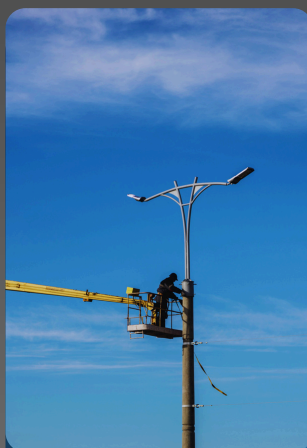


eBrain (Central Management)



A cloud-based, centralized device management platform with multi-tenant support, enabling efficient management of devices across multiple locations and branches.

Use Cases



Smart Lamp Pole



Traffic Light,
Outdoor surveillance



Smart ports Crane
control, monitoring,
outdoor AGV



Maritime boat
management

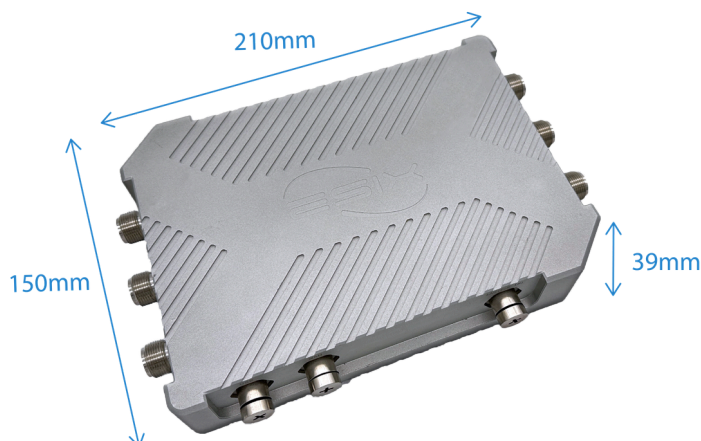
XATELLITE+ SPECIFICATION

Series		+
Model		Xatellite +
Summary	Signature	Waterproof Single 5G
	Bandwidth bounding & redundancy	5G + fixed line
Hardware	CPU	64-bit Quad-Core ARMv8
	NPU	Twelve-Threaded network processing unit
	Form Factor	Aluminum alloy waterproof case
	Mounting Kit Interface	75 x 75 mm VESA mount
Cellular Network	Communication Standard	3GPP Release 16 NSA/SA, operation sub-6 Ghz
	Application Network	5G NR SA, 5G NR NSA, LTE-FDD, LTE-TDD, WCDMA
	5G NR Transmission Rate	5G SA Sub-6: - Downstream 2.4Gbps - Upstream 900 Mbps 5G NSA Sub-6: - Downstream 3.4 Gbps - Upstream 550 Mbps
	4G LTE Transmission Rate	CAT-19 Downstream 1.0 Gbps CAT-18 Upstream 200 Mbps
	Network Frequency Band: 5G (SA)	N1/N2/N3/N5/N7/N8/N12/N13/N14/N18/N20/N25/N26/N28/N29/N30/N38/N40/N41/N48/N66/N70/N71/N75/N76/N77/N78/N79
	Network Frequency Band: 5G (NSA)	N1/N2/N3/N5/N7/N8/N12/N13/N14/N18/N20/N25/N26/N28/N29/N30/N38/N40/N41/N48/N66/N70/N71/N75/N76/N77/N78/N79
	Network Frequency Band: 4G	B1/B2/B3/B4/B5/B7/B8/B12/B13/B14/B17/B18/B19/B20/B25/B26/B28/B29/B30/B32/B34/B38/B39/B40/B41/B42/B43/B46/B48/B66/B71
Antenna Connectors	4 x 5G antennas (N-Type)	
Wi-Fi	Wi-Fi Standard	Wi-Fi 6; 802.11 a/b/g/n/ac/ax
	Operating Frequency	2412MHz ~ 2462MHz 5180MHz ~ 5825MHz
	Transmission Rate	2x2 MU-MIMO Wi-Fi 2.4GHz radio Up to 574Mbps physical data rate 2x2 MU-MIMO Wi-Fi 5GHz radio Up to 1210Mbps physical data rate
	Modulation Technology	802.11 b: DSSS (DBPSK, QPSK, CCK) 802.11 a/g/n: OFDM (BPSK, QPSK, 16-QAM, 64-QAM) 802.11 ac: OFDM (BPSK, QPSK, 16-QAM, 64-QAM, 256-QAM) 802.11 ax: OFDM (BPSK, QPSK, 16-QAM, 64-QAM, 256-QAM, 1024-QAM)
	Antenna Connectors	2 x Dual bands Wi-Fi antennas (N-Type)
	Wi-Fi Connections	Max 512 x Wi-Fi connections (concurrently)
I/O	LAN/WAN Ports	2 x GE M12 Ethernet ports (With 2 x RJ45 adapted cables, one is POE+ input)
	SIM Options	2 x Nano Sim slots (Single Pass, Single Standby)
	Reset	1 x Reset / Factory Restore Button

XATELLITE+ SPECIFICATION



Series		+
Model		Xatellite +
Operation Environment	Temperature	-30°C ~ 75°C; -40°C ~ 85°C (Extended)
	Humidity	5% ~ 95% non-condensing
	Ingress Protection Rating	IP67
Storage Environment	Temperature	-40°C ~ 85°C
Power	Input	M12 IEEE 802.3 AT PoE+ Available adaptors - None (default) - POE+ injector (optional)
	Consumption	7.3W: WiFi6 Off, 5G module On (no data flow) 11.2W: WiFi6 On, 5G module On (iperf3 via WiFi6 & 5G Modem)
Functions	Network Features	Support Policy-Based Routing, OSPFv2, BGP+4, MPLS, SRv6, NAT, PAT, BFD, Multi-WAN, 802.1Q VLAN, VxLAN, STP, RSTP, MSTP, QinQ over IP, MQTT Broker
	Cellular	Support Frequency Locking, Network Slicing, Bridge Mode, 5G LAN
	Security	Support SIM PIN protection, Firewall, Mac address access control, IP address access control, MACsec, Wi-Fi Encryption authentication
	VPN	Support IPsec VPN, DMVPN, GRE, WireGuard, EVPN-VXLAN, IPfiber(L2 overlay)
	GNSS	Support GPS, Beidou, Galileo(Optional)
	Administrator Maintenance	Support SNMP, SSH, WebUI, eBrain (Central Management)
Performance	Router Throughput (Max)	4 Gbps
	IPSec Throughput (Max)	AES-128-SHA1: 420 Mbps AES-256-SHA256: 380 Mbps
	IPfiber Throughput (Max)	Standard Encryption (AES-128-GCM-SHA256): 640 Mbps Enhanced Encryption (AES-256-GCM-SHA384): 440 Mbps
	MACsec Throughput (Max)	GCM-AES-128: 730 Mbps GCM-AES-256: 710 Mbps
	*Note: Router/IPsec/MACsec/IPfiber Throughput is based on MTU 1500 bytes. Actual performance can vary across different networking environments. Figures apply to the latest hardware revision. The throughput result is tested with DHCP/Static IP.	



Dimension:
210 x 150 x 39mm

Weight (body):
≈ 1380g

There might be colour aberration between picture and each existence

ORDERING INFORMATION

SKU	Packing List
X5250-200 (Reference: Xatellite+)	SKU: X5250-200 - Xatellite+ router body - Single 5G modem inside - M12-to-RJ45 Waterproof Cord for Ethernet Connection (1 meter) (EW-M12-R) × 1 - N-Type Fiberglass Waterproof Wi-Fi Antenna (EA-N-W) × 2 - N-Type Fiberglass Waterproof 5G Antenna (EA-N-4) × 4 - M12 Waterproof Cap × 3 - PoE+ Injector (EP-P-30R) *M12-Female USB Waterproof Cord (EW-M12-U) is not included. *Lightning Protection Connector (EA-N-FL) is not included.
Accessories	
EP-P-30R	PoE+ Injector 30W
EA-N-W	N-Type Fiberglass Waterproof Wi-Fi Antenna
EA-N-4	N-Type Fiberglass Waterproof 5G Antenna
EA-N-FL	N-Type Lightning Protection Connector (1 connector for 1 antenna)
EW-M12-R	M12-to-RJ45 Waterproof Cord for Ethernet Connection (1 meter)
EW-M12-U	M12-to-Female USB Waterproof Cord (1.5 meters)
EW-M12-S	M12-to-SFP Waterproof Connector
EW-N-D	N-Type Fiberglass Waterproof Cap
EW-M-D	M12 Waterproof Cap
EI-V75-W	VESA 75 × 75 mm Wall Mount kit
EI-V75-P	VESA 75 × 75 mm Post Mount kit

*Any special requirements, please contact to [sales representative](#).

ESIX STANDARD WARRANTY POLICY



STANDARD HARDWARE/SOFTWARE WARRANTY POLICY

eSIX warrants solely to the original end-user purchaser ("Purchaser") that hardware ("Hardware") purchased from eSIX or our Authorized Partners will be free from defects in materials and workmanship when used within the limits set forth in the documentation (data sheet and user manual) for a period of twelve (12) months, starting from the time of shipment of the Hardware, or the date the Hardware was purchased according to sales registration, whichever is later. (If a 36-month warranty is required, please contact the sales representative.)

This limited warranty is non-transferable and extends only to the original end-user purchaser who acquired the Hardware from an Authorized Partner who has the right to sell in the end-user's territory. eSIX explicitly disclaims any warranty obligations for Hardware that is sold outside of the assigned territory of an Authorized Partner. Your exclusive remedy and eSIX' entire liability under this limited warranty will be for eSIX, at its option, to (a) repair the Hardware with new or refurbished parts, or (b) replace the Hardware with a reasonably available equivalent new or refurbished eSIX Hardware. Any repaired or replacement Hardware will be warranted for the remainder of the original Warranty Period or thirty (30) days, whichever is longer. All Hardware and parts that are replaced become the property of eSIX.

EXCLUSION AND LIMITATIONS

This limited warranty does not apply if: (a) the Hardware assembly seal has been removed or damaged, (b) the Hardware has been altered or modified, except by eSIX, (c) the Hardware damage was caused by use with non eSIX Hardware, (d) the Hardware has not been installed, operated, repaired, or maintained in accordance with instructions supplied by eSIX, (e) the Hardware has been subjected to abnormal physical or electrical stress, abuse, misuse, negligence, or accident, (f) the serial number on the Hardware has been altered, defaced, or removed, (g) the Hardware damage was caused by lightning, power surges or wrong voltage usage, or (h) the Hardware is supplied or licensed for beta, evaluation, promotional, testing or demonstration purposes for which eSIX does not charge a purchase price or fee.

ALL SOFTWARE PROVIDED BY ESIX ("SOFTWARE") WITH OR WITHOUT THE HARDWARE, WHETHER FACTORY LOADED ON THE HARDWARE, CONTAINED ON MEDIA ACCOMPANYING THE HARDWARE OR DOWNLOADED FROM OUR WEBSITE, IS PROVIDED "AS IS" WITHOUT WARRANTY OF ANY KIND.

Without limiting the foregoing, eSIX does not warrant that the operation of the Hardware or Software will be uninterrupted or error free. Also, due to the continual development of new techniques for intruding upon and attacking networks, eSIX does not warrant that the Hardware, Software or any equipment, system or network on which the Hardware or Software is used will be free of vulnerability to intrusion or attack. The Hardware and Software may include or be bundled with third party software or service offerings. This limited warranty shall not apply to such third party software or service offerings. This limited warranty does not guarantee any continued availability of a third party's service for which this Hardware's or Software's use or operation may require.